



Measles is a highly contagious disease. It can infect **90%** of people in close contact.

Danger Signs !



High-grade fever



Rapid breathing



Chest indrawing while breathing



Lethargic or with no movements



Sometimes seizures

Visit your nearest **BMC Health Centre** in case of any Danger Signs.

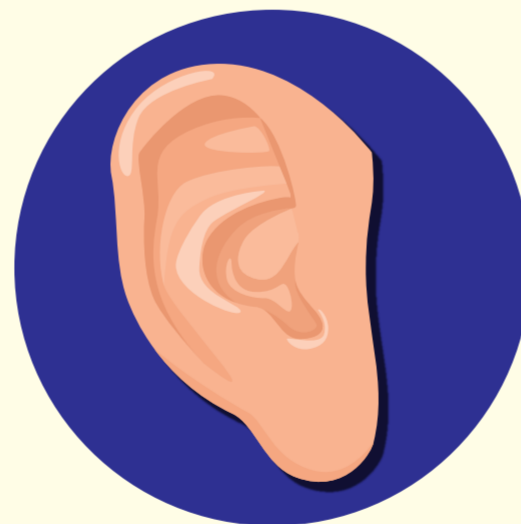
Measles can cause serious health-related complications as given below.



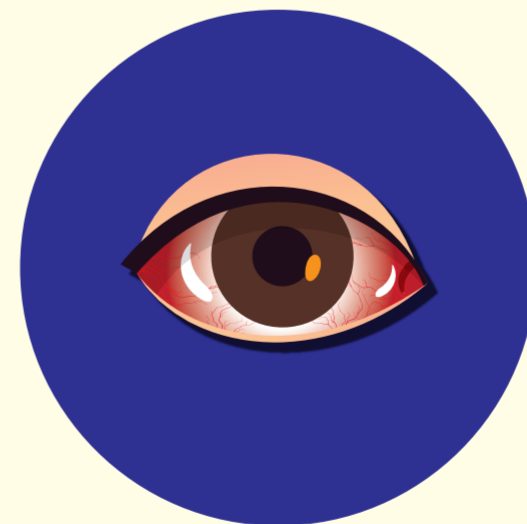
Pneumonia



Diarrhoea



Ear infection



Eye infection



Brain infection

It can also lead to Death

Measles can be prevented, Please make sure that your child has received 2 doses of Measles containing vaccine along with Vitamin A.

